

APITONG: DURABLE AND TRUSTED

Apitong, also known as Keruing, is renowned for its exceptional strength-to-weight ratio. Apitong has been the preferred hardwood for flatbed trailer decking and industrial applications for over 25 years. Its heartwood varies from brown to dark brown or light to dark red-brown, sometimes with a hint of purple, and is well-defined from the buff colored or gray sapwood. Apitong's uniform straight grain and moderately coarse texture contribute to its durability and resilience under heavy loads.

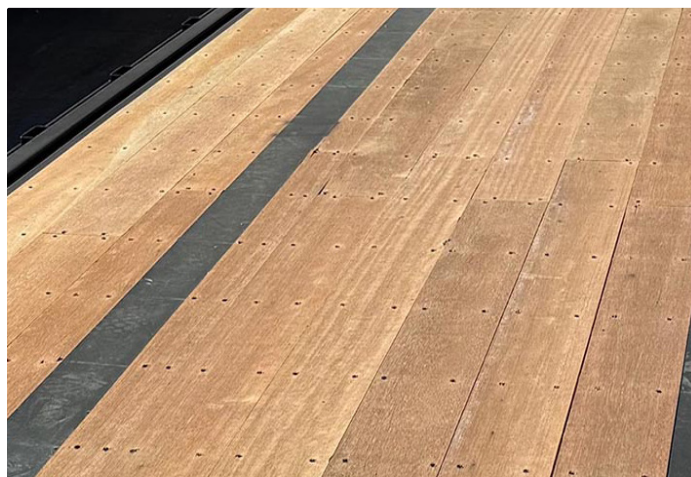
UNMATCHED STRENGTH AND LONGEVITY

Apitong hardwood is celebrated for its incredible strength, resilience, and longevity. Its dense grain structure and natural durability make it ideal for enduring the wear and tear of heavy equipment, shifting cargo, and challenging weather conditions. With a proven track record spanning decades, Apitong has consistently outperformed alternative hardwoods in both performance and cost-effectiveness, making it the go-to choice for trailer decking across the globe.

PRODUCT AVAILABILITY

Genuine Apitong is available in 1-1/8", 1-5/16", 1-3/8" and 1-3/4" Shiplap as well as a variety of Nailer Board sizes and Tee-Board patterns. We also stock S4S and Rough Sawn Boards in sizes ranging from 6/4 x 8 through to 3 x 12. Custom Patterns are available on request.

Reach out to our Industrials Sales Team for more information.



TECHNICAL SPECIFICATIONS

Janka Hardness: 1,520 lbf

Strength (MOR): 19,900 psi

Stiffness (MOE): 2,070 1000 psi

Density (kg/m³): 790

Color: The heartwood of Apitong ranges from brown to dark brown, light to dark red-brown with hints of purple. Sapwood is buff or gray colored.

Photosensitivity: Moderate

Species: *Dipterocarpus grandiflorus*

Tree Characteristics: The Angelim Pedra tree can reach up to 150 feet in height and 10 feet in diameter.

Geographic Area: Apitong can be found across southeast Asia, primarily in countries like Malaysia, Indonesia, Thailand, and the Philippines.

Texture: Moderately Coarse

Grain: Straight to interlocked

Luster: Low to moderate

Durability Rating: Very durable and resistant to wear, decay, and insect attacks.

